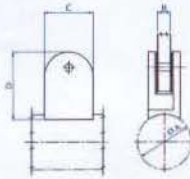


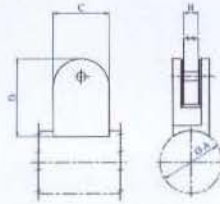
CONSTRUCTION HARDWARE

Glass Wall Hardware 支撐

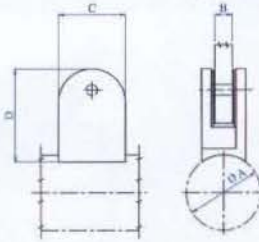
DRAIN TUBE made of Brass/Stainless Steel



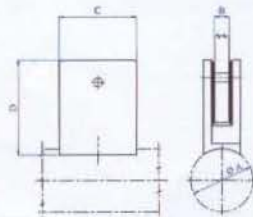
Code	Dimensions CxD	For tube A	Glass thk. B
HDS00970	53x68mm 2-5/64"x2-5/8"	∅ 33.7mm 1-1/3"dia.	12.76mm 1/2"
HDS00971	53x68mm 2-5/64"x2-5/8"	∅ 42.4mm 1-2/3"dia.	12.76mm 1/2"
HDS00972	53x64mm 2-5/64"x2-33/64"	∅ 48.3mm 1-7/8"dia.	12.76mm 1/2"
HDS00973	53x60mm 2-5/64"x2-3/8"	Superficie piana Flat face	12.76mm 1/2"



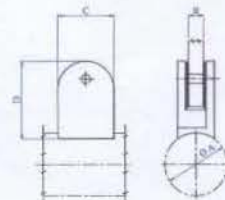
Code	Dimensions CxD	For tube A	Glass thk. B
HDS00913	38x53mm 1-1/2"x2-3/64"	∅ 33.7mm 1-1/3"dia.	8e 10mm 5/16"and 3/8"
HDS00912	38x53mm 1-1/2"x2-3/64"	∅ 42.4mm 1-2/3"dia.	8e 10mm 5/16"and 3/8"
HDS00911	38x49mm 1-1/2"x1-15/16"	Superficie piana Flat face	8e 10mm 5/16"and 3/8"



Code	Dimensions CxD	For tube A	Glass thk. B
HDS009	43x64mm 1-11/16"x2-33/64"	∅ 42.4mm 1-2/3"dia.	8e 10mm 5/16"and 3/8"
HDS0090	43x64mm 1-11/16"x2-33/64"	∅ 48.3mm 1-7/8"dia.	8e 10mm 5/16"and 3/8"
HDS0092	43x64mm 1-11/16"x2-33/64"	∅ 50.8mm 2"dia.	8e 10mm 5/16"and 3/8"
HDS0091	43x60mm 1-11/16"x2-3/8"	Flat face	8e 10mm 5/16"and 3/8"
HDS00960	43x64mm 1-11/16"x2-33/64"	∅ 42.4mm 1-2/3"dia.	10e 12mm 5/16"and 3/8"
HDS00961	43x64mm 1-11/16"x2-33/64"	∅ 48.3mm 1-7/8"dia.	10e 12mm 5/16"and 3/8"
HDS00962	43x60mm 1-11/16"x2-3/8"	Flat face	10e 12mm 5/16"and 3/8"

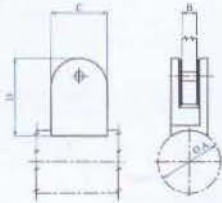


Code	Dimensions CxD	For tube A	Glass thk. B
HDS00941	43x48mm 1-11/16"x1-7/8"	∅ 33.7mm 1-1/3"dia.	8e 10mm 5/16"and 3/8"
HDS00921	43x48mm 1-11/16"x1-7/8"	∅ 42.4mm 1-2/3"dia.	8e 10mm 5/16"and 3/8"
HDS00931	43x43mm 1-11/16"x1-11/16"	Superficie piana Flat face	8e 10mm 5/16"and 3/8"
HDS00921304	43x48mm 1-11/16"x1-7/8"	∅ 42.4mm 1-2/3"dia.	8e 10mm 5/16"and 3/8"



Code	Dimensions CxD	For tube A	Glass thk. B
HDS00851	38x52mm 1-1/2"x2-3/64"	∅ 33.7mm 1-1/3"dia.	6e 8mm 1/4"and 5/16"
HDS00850	38x52mm 1-1/2"x2-3/64"	∅ 42.4mm 1-2/3"dia.	6e 8mm 1/4"and 5/16"
HDS00852	38x49mm 1-1/2"x1-15/16"	Flat face	6e 8mm 1/4"and 5/16"

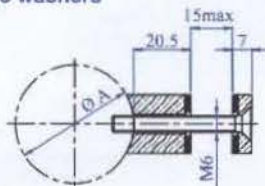
CONSTRUCTION HARDWARE



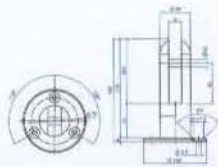
Code	Dimensions CxD	For tube A	Glass thk. B
HDS00872	43x66mm 1-11/16"x2-5/8"	∅ 33.7mm 1-1/3" dia.	8e 10mm 5/16" and 3/8"
HDS00871	43x66mm 1-11/16"x2-5/8"	∅ 42.4mm 1-2/3" dia.	8e 10mm 5/16" and 3/8"
HDS00870	43x62mm 1-11/16"x7-7/16"	Flat face	8e 10mm 5/16" and 3/8"

GLASS CLAMPS

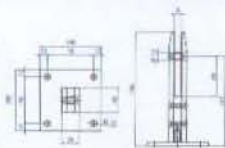
2 pieces with screw and plastic washers



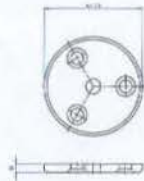
Code	For tube A
HDS40550	∅ 33.7mm 1-1/3" dia.
HDS40560	∅ 42.4mm 1-2/3" dia.
HDS40570	Flat face



Code	Glass thk. A
HD52000200	12e 17.52mm 1/2" and 11/16"

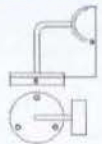


Code	Glass thk. A
HDS2100200	12e 17.52mm 1/2" and 11/16"

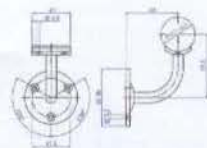


Code	Dimensions A	External holes	Central hole
HDS4755/D	∅ 70x6mm 2-3/4" dia. x 15/64"	3x∅9mm 3-23/64" dia.	∅ 10.5mm 27/64" dia.

AISI 316 STAINLESS STEEL PIPE SUPPORT

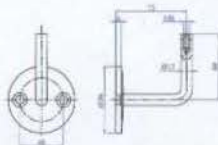


Code	D mm	H mm	For Pipe mm
H49007A	63.5	87.5	38
H49007B	63.5	87.5	50



Code	For tube
HDS459	∅ 33.7mm - ∅ 42.4mm 1-1/3" dia. - 1-2/3"

With internal thread M6



Code	Dimensions A	Central hole
HDS460	∅ 70x6mm 2-3/4" dia. x 15/64"	M6

CONSTRUCTION HARDWARE

Hinge 铰链 (合页)

AISI 316 STAINLESS STEEL CASTING HINGE



Code	L mm	W mm
H0600A	140	39

AISI 316 STAINLESS STEEL CASTING HINGE



Code	L mm	W mm
H0601A	38	38
H0602A	50	50

AISI 316 STAINLESS STEEL CASTING HINGE



Code	L mm	W mm
H0603A	102	25

AISI 316 STAINLESS STEEL CASTING HINGE



Code	L mm	W mm
H0603B	150	25

AISI 316 STAINLESS STEEL CASTING HINGE



Code	L mm	W mm
H0603C	203	98

AISI 316 STAINLESS STEEL CASTING HINGE



Code	L mm	W mm
H0604A	76	38

AISI 316 STAINLESS STEEL CASTING HINGE



Code	L mm	W mm
H0604B	90	38
H0604C	90	38

AISI 316 STAINLESS STEEL CASTING HINGE



Code	L mm	W mm
H0606A	57	38
H0607A	76	38

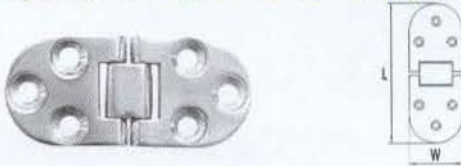
CONSTRUCTION HARDWARE

AISI 316 STAINLESS STEEL CASTING HINGE



Code	L mm	W mm
H0607B	107	38

AISI 316 STAINLESS STEEL CASTING HINGE



Code	L mm	W mm
H6430A	64	30

AISI 316 STAINLESS STEEL CASTING HINGE



Code	L mm	W mm
H0606C	55	38
H0607C	70	38

AISI 316 STAINLESS STEEL CASTING HINGE



Code	L mm	W mm
H8242A	82	42

AISI 316 STAINLESS STEEL CASTING HINGE



Code	L mm	W mm
H06008	100	60

AISI 316 STAINLESS STEEL CASTING HINGE



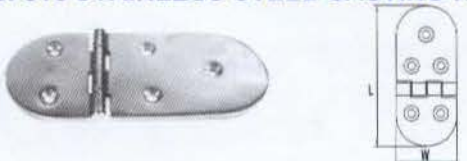
Code	L mm	W mm
H19065A	190	65

AISI 316 STAINLESS STEEL CASTING HINGE



Code	L mm	W mm
H19065B	190	65

AISI 316 STAINLESS STEEL CASTING HINGE



Code	L mm	W mm
H12640A	126	40
H14665A	146	65

CONSTRUCTION HARDWARE

AISI 316 STAINLESS STEEL CASTING HINGE



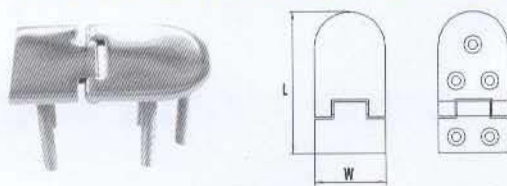
Code	L mm	W mm
H12640B	126	40
H14665B	146	65

AISI 316 STAINLESS STEEL CASTING HINGE



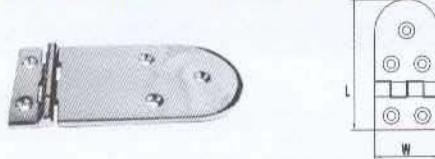
Code	L mm	W mm
H7640A	76	40

AISI 316 STAINLESS STEEL CASTING HINGE



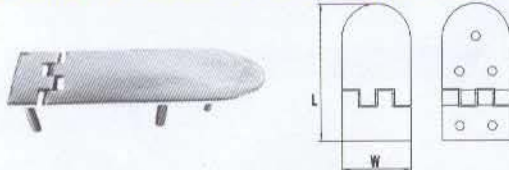
Code	L mm	W mm
H7640B	76	40

AISI 316 STAINLESS STEEL CASTING HINGE



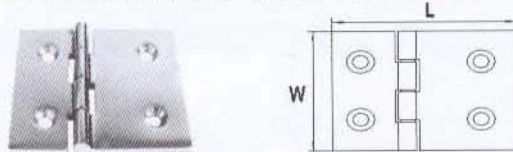
Code	L mm	W mm
H13465A	134	65

AISI 316 STAINLESS STEEL CASTING HINGE



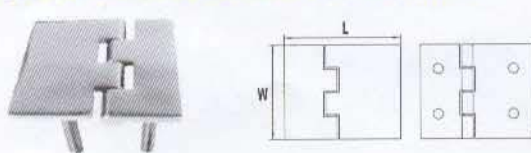
Code	L mm	W mm
H13465B	134	65

AISI 316 STAINLESS STEEL CASTING HINGE



Code	L mm	W mm
H8065A	80	65
H5265A	52	65

AISI 316 STAINLESS STEEL CASTING HINGE



Code	L mm	W mm
H8065B	80	65
H5265B	52	65

AISI 316 STAINLESS STEEL CASTING HINGE



Code	L mm	W mm
H7040A	70	40

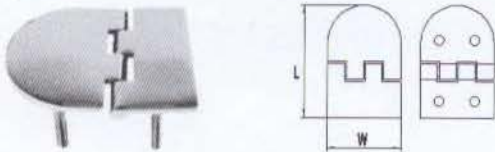
CONSTRUCTION HARDWARE

AISI 316 STAINLESS STEEL CASTING HINGE



Code	L mm	W mm
H8165A	81	65
H7265A	72	65
H8365A	83	65
H10365A	103	65

AISI 316 STAINLESS STEEL CASTING HINGE



Code	L mm	W mm
H7040B	70	40
H7265B	72	65
H8365B	83	65
H10365B	103	65

AISI 316 STAINLESS STEEL CASTING HINGE



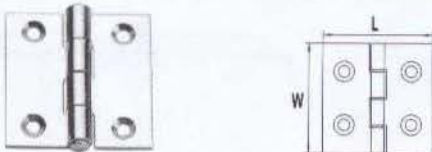
Code	L mm	W mm
H913094	94	49

AISI 316 STAINLESS STEEL CASTING HINGE



Code	L mm	W mm
H913084	84	45
H913069	69	35

AISI 316 STAINLESS STEEL STAMPING HINGE



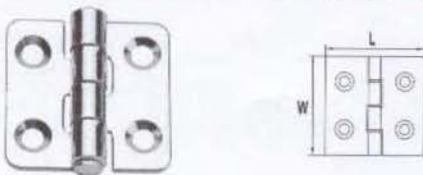
Code	L mm	W mm
H801025	30	25
H801035	40	35
H801040	50	40

AISI 316 STAINLESS STEEL STAMPING HINGE



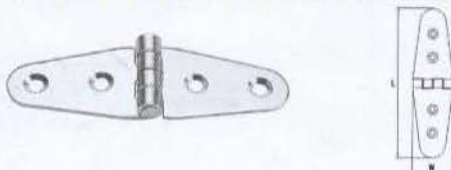
Code	L mm	W mm
H801360	59	40
H801380	80	60
H801382	80	80

AISI 316 STAINLESS STEEL STAMPING HINGE



Code	L mm	W mm
H841580	40	40

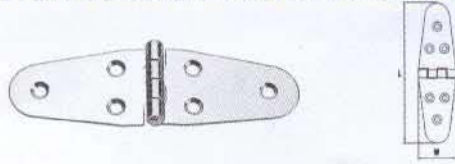
AISI 316 STAINLESS STEEL STAMPING HINGE



Code	L mm	W mm
H842720	100	30

CONSTRUCTION HARDWARE

AISI 316 STAINLESS STEEL STAMPING HINGE



Code	L mm	W mm
H841720	140	40

AISI 316 STAINLESS STEEL STAMPING HINGE



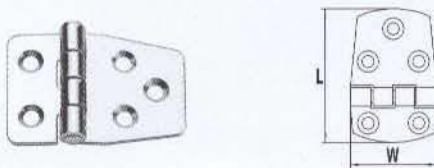
Code	L mm	W mm
H844020	76	40

AISI 316 STAINLESS STEEL STAMPING HINGE



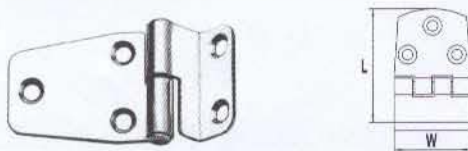
Code	L mm	W mm
H8120655	76	40

AISI 316 STAINLESS STEEL STAMPING HINGE



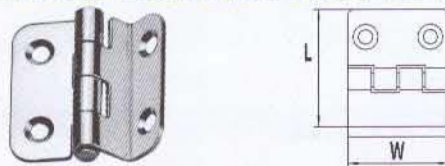
Code	L mm	W mm
H841500	59	40

AISI 316 STAINLESS STEEL STAMPING HINGE



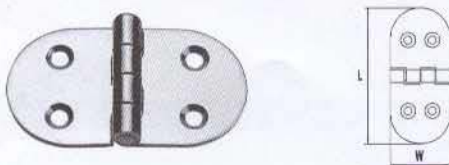
Code	L mm	W mm
H841571	68	40

AISI 316 STAINLESS STEEL STAMPING HINGE



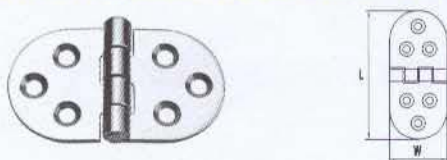
Code	L mm	W mm
H81556	37	35

AISI 316 STAINLESS STEEL STAMPING HINGE



Code	L mm	W mm
H841700	74	40

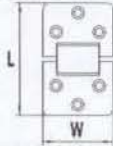
AISI 316 STAINLESS STEEL STAMPING HINGE



Code	L mm	W mm
H81554	70	40

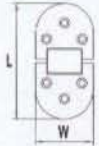
CONSTRUCTION HARDWARE

AISI 316 STAINLESS STEEL STAMPING HINGE



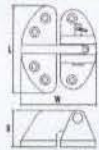
Code	L mm	W mm
H7413	70	40

AISI 316 STAINLESS STEEL STAMPING HINGE



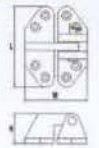
Code	L mm	W mm
H7418	70	38

AISI 316 STAINLESS STEEL CASTING HATCH HINGE



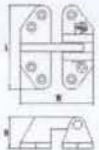
Code	D mm	L mm	H mm
H0608A	75.3	56.4	34

ISI 316 STAINLESS STEEL CASTING HATCH HINGE



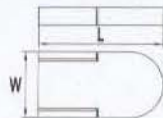
Code	D mm	L mm	H mm
H0608B	72	55.5	30.4

AISI 316 STAINLESS STEEL CASTING HATCH HINGE



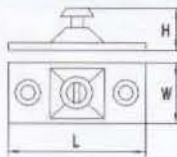
Code	D mm	L mm	H mm
H0608C	72	66.5	30.4

ISI 316 STAINLESS STEEL CASTING HATCH HINGE



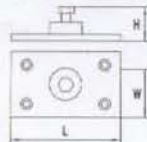
Code	L mm	W mm
H2252A	57	30

AISI 316 STAINLESS STEEL CASTING DECK HINGE



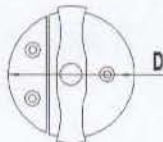
Code	D mm	H mm	For Pipe mm
H0410A	50.8	22.2	32.8
H0411A	50.8	19	32.8

AISI 316 STAINLESS STEEL CASTING DECK HINGE



Code	D mm	L mm	H mm
H0605B	74.6	74.6	32

AISI 316 STAINLESS STEEL DOOR BUTTON



Code	D mm
H0045	42.6

CONSTRUCTION HARDWARE

Ladder

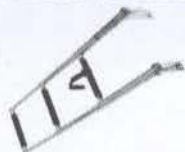
梯子

AISI 316/304 STAINLESS STEEL TELESCOPIC LADDER



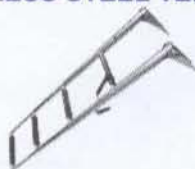
Code	Step	Width mm	Length mm
H0101	2	254	598

AISI 316/304 STAINLESS STEEL TELESCOPIC LADDER



Code	Step	Width mm	Length mm
H0201	3	178	875
H0202	3	254	875

AISI 316/304 STAINLESS STEEL TELESCOPIC LADDER



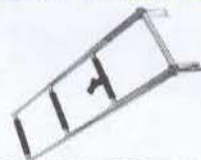
Code	Step	Width mm	Length mm
H0301	4	178	1145
H0302	4	254	1145

AISI 316/304 STAINLESS STEEL TELESCOPIC LADDER



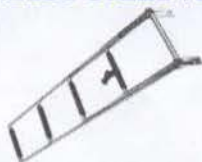
Code	Step	Width mm	Length mm
H0401	2	254	598

AISI 316/304 STAINLESS STEEL TELESCOPIC LADDER



Code	Step	Width mm	Length mm
H0501	3	254	875

AISI 316/304 STAINLESS STEEL TELESCOPIC LADDER



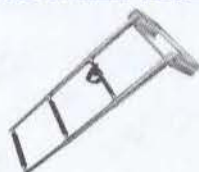
Code	Step	Width mm	Length mm
H0601	4	178	1145

AISI 316 STAINLESS STEEL TELESCOPIC LADDER



Code	Step	Width mm	Length mm
H0701	2	178	598
H0702	2	254	598

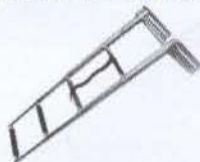
AISI 316 STAINLESS STEEL TELESCOPIC LADDER



Code	Step	Width mm	Length mm
H0703	3	178	875
H0704	3	254	875

CONSTRUCTION HARDWARE

AISI 316 STAINLESS STEEL TELESCOPIC LADDER



Code	Step	Width mm	Length mm
H0801	4	178	1145
H0802	4	254	1145

AISI 316 STAINLESS STEEL TELESCOPIC LADDER



Code	Step	Width mm	Length mm
H0901	3	178	600
H0902	4	178	875
H0903	5	178	1080
H0904	3	228	600
H0905	4	228	875
H0906	5	228	1080

AISI 316 STAINLESS STEEL FOLDING LADDER



Code	Step	Width mm	Length mm
H1001	2+1	165	560
H1002	2+2	165	755

AISI 316 STAINLESS STEEL FOLDING LADDER



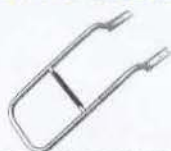
Code	Step	Width mm	Length mm
H1101	3	228	665
H1102	4	228	940
H1103	5	228	1155

AISI 316 STAINLESS STEEL FOLDING LADDER



Code	Step	Width mm	Length mm
H1201	2+1	245	720
H1202	2+2	245	960
H1203	3+1	245	990
H1204	3+2	245	1220

AISI 316 DIVE PLATFORM LADDER



Code	Step	Width mm	Length mm
H1401	2	260	600

AISI 316 STAINLESS STEEL TELESCOPIC LADDER BRACKET



Code	L mm	W mm	H mm
H1301	25	40	140

AISI 316 STAINLESS STEEL TELESCOPIC LADDER BRACKET



Code	L mm	W mm	H mm
H1302	65	295	360